

Richfield 2040: Public Engagement Phase 1 Results

Approach

Richfield 2040

INSTRUCTIONS

Utilize the tabs below to answer questions and provide valuable input to inform the city's 2040 Comprehensive Plan. Detailed instructions and map viewing options are available under "About and Help".

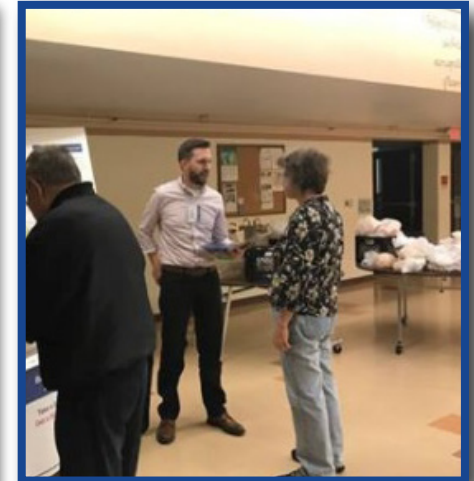
Existing Systems

City Limits

Provide Your Input!

- Identify your favorite place
- Identify the City's Best Characteristic
- Identify your Biggest Concern for the City
- Identify a Needed or Valued City Amenity

Richfield 2040 About & Help Identify a Location/Amenity Anonymous



Pop-Up Events

- Transit Routes - May 9th
- Loaves and Fishes (Hope Church) - May 10th
- City Hall/DM - May 30th
- Neighborhood Meetings (15) Led By the Steering Committee

Online Engagement

- Public Input Mapping Tool - April 20th through June 20th
- Facebook Postings - Ongoing



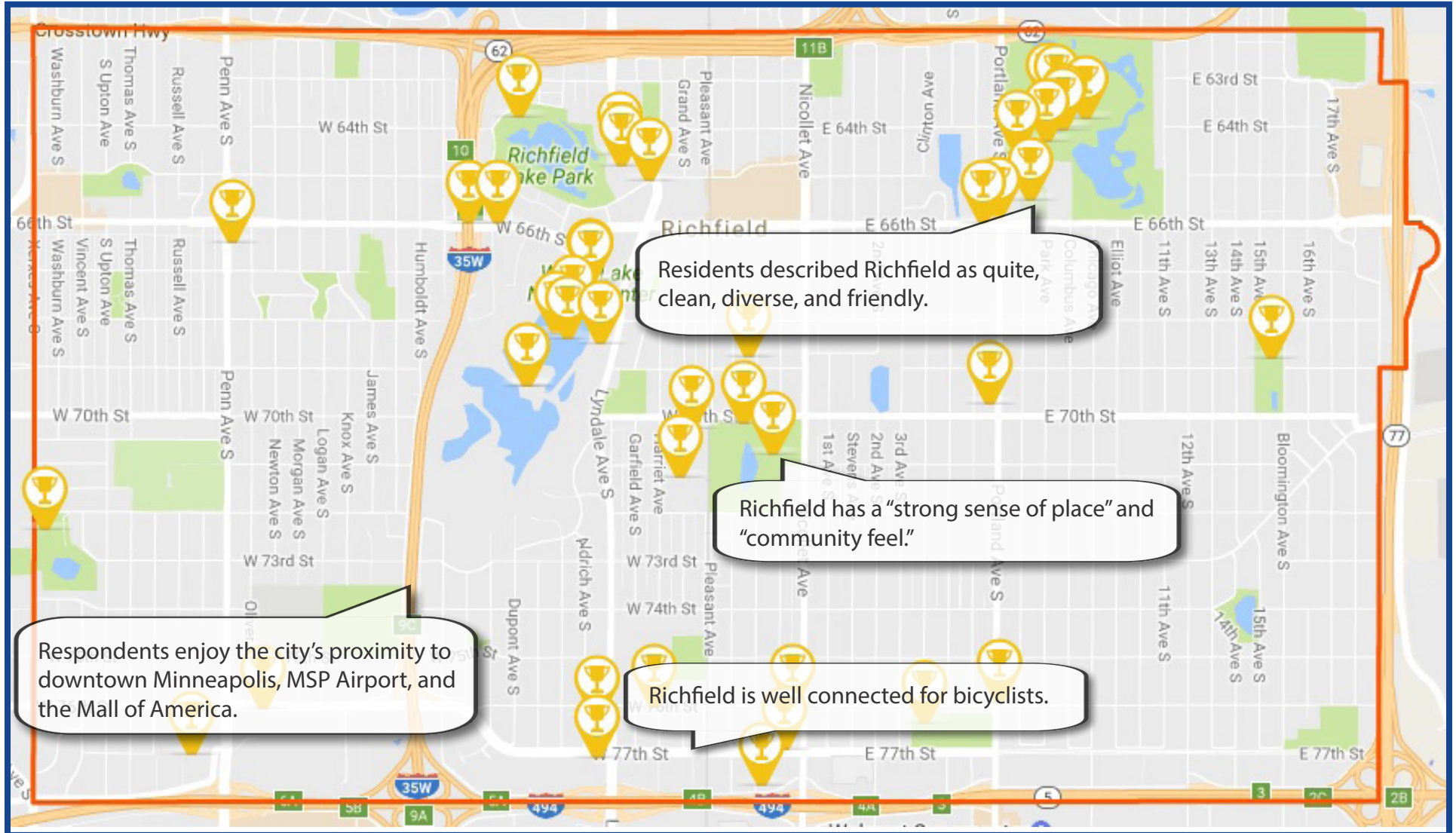
What have we heard?

Identify the City's Best Characteristic



What have we heard?

Identify the City's Best Characteristic

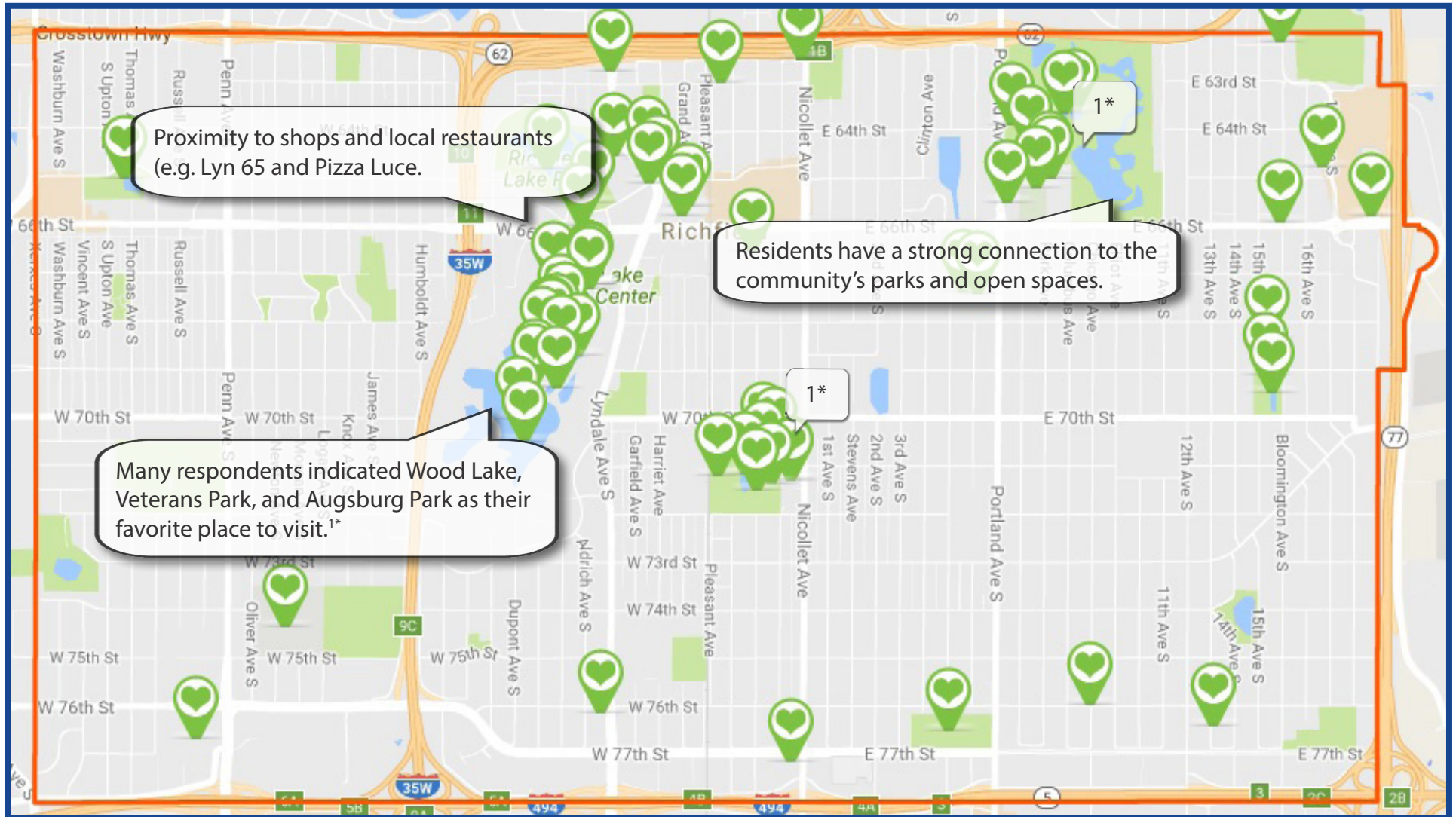


What have we heard?

What is your favorite place in Richfield?



What is your favorite place in Richfield?



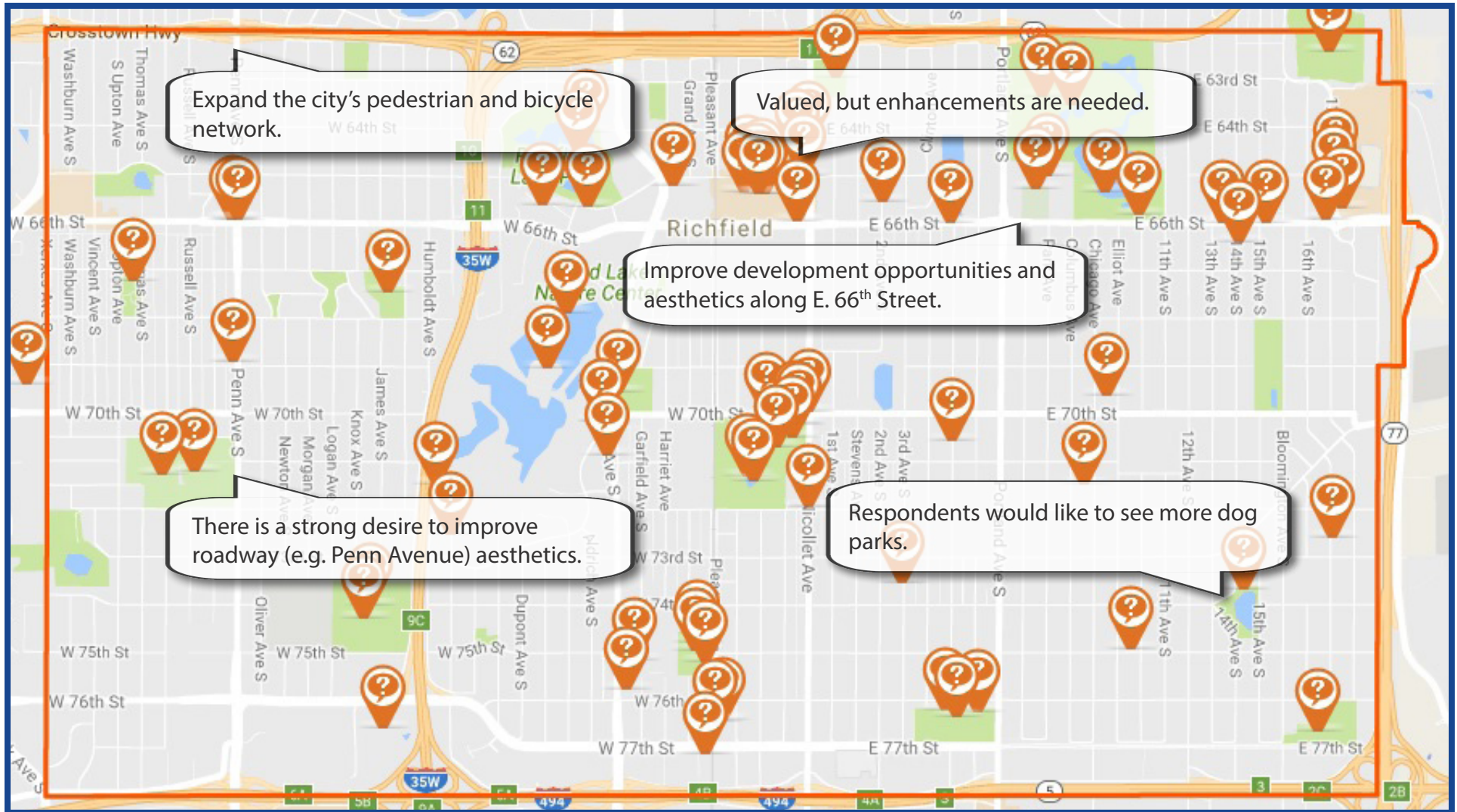
What have we heard?

What is a needed amenity in Richfield?



What have we heard?

What is a needed amenity in Richfield?



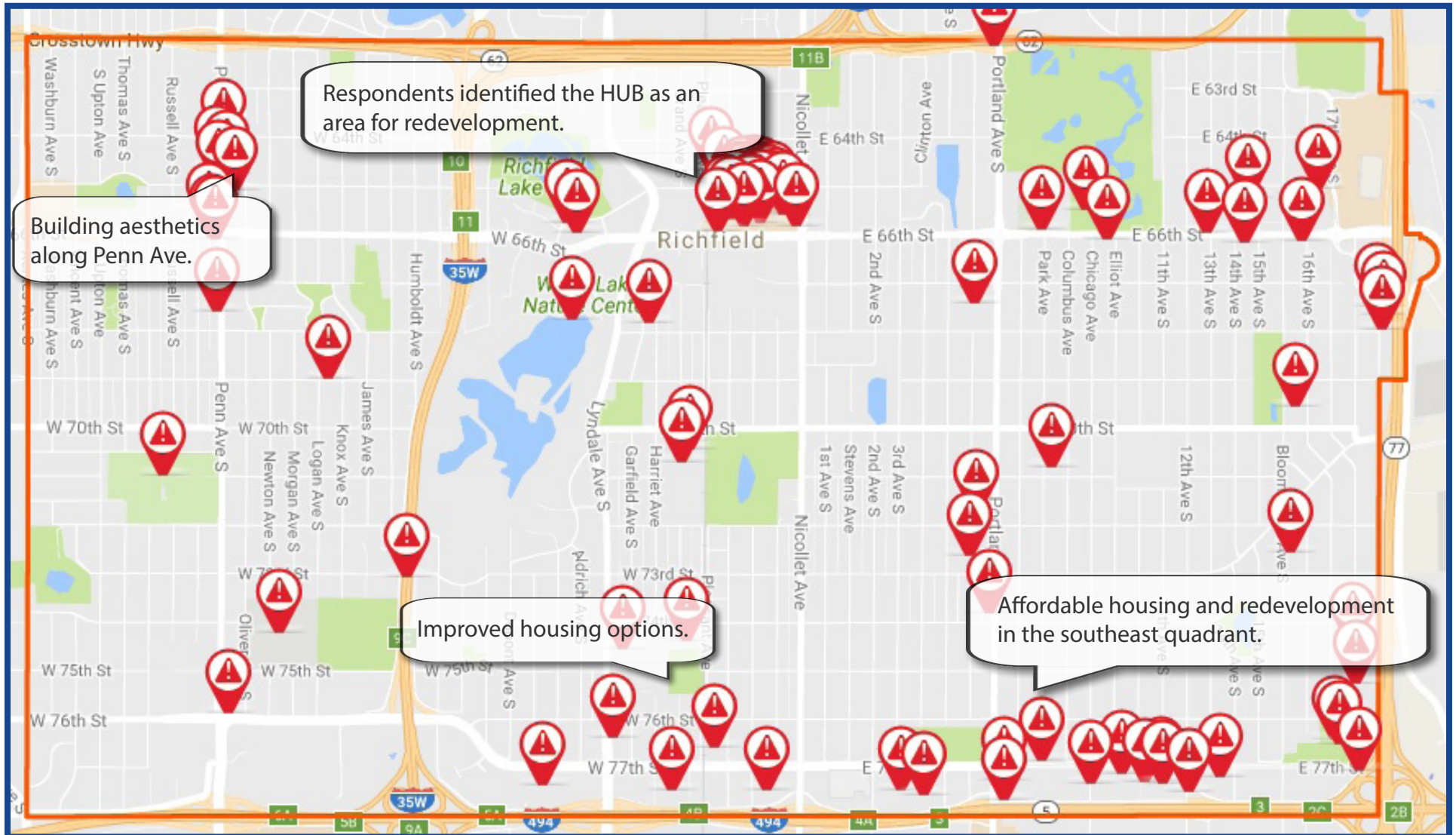
What have we heard?

Identify your biggest concern for the future of Richfield?



What have we heard?

Identify your biggest concern for the future of Richfield?



What have we heard?

How do you typically travel to your favorite place in Richfield?
(Choose all that apply)



Car - 62%



Walking - 47%



Biking - 38%



Transit - 0.05%

What makes Richfield a great place to live, work, and play (key themes)?

- 🏠 Respondents enjoy the city's **proximity** to downtown Minneapolis, MSP Airport, local businesses, and the Mall of America.
- 🏠 Residents have a strong connection and appreciation for the community's **parks and open spaces**.
- 🏠 Respondents recognize the benefits of Richfield's **small town character, inclusive feel, and diverse people**.
- 🏠 Residents value the **affordability** of the community.
- 🏠 Residents appreciate and utilize the **bike and pedestrian trails** throughout the community.

What should Richfield look like in 2040?

- 🏠 Respondents envision more **diverse housing opportunities, people, and local small business opportunities**.
- 🏠 Residents expect **blighted areas** of Richfield to be **redeveloped**.
- 🏠 Respondents anticipate there to be **more opportunities or improved services** for **walking, biking, and transit**.
- 🏠 Residents expect **enhanced education** opportunities and standards along with modernized facilities.
- 🏠 Residents envision **less concerns about crime** through greater enforcement and community engagement.